

ZAXIS series

TATA HITACHI

Reliable solutions

ZAXIS 75

The Mighty Mini



HYDRAULIC EXCAVATOR

Engine Power : 55 PS @ 2100 rpm
Operating Weight : 7400 kg
Bucket Capacity : 0.3 m³

SPECIFICATIONS

ENGINE

Model.....Isuzu CC-4JG1
 Type.....Water-cooled, direct injection, diesel engine
 No. of cylinders.....4
 Rated power.....55 PS @ 2100 rpm
 Max.torque.....19.6 kgf-m @ 1800 rpm

HYDRAULIC SYSTEM

Main pumps.....3 variable displacements axial piston pumps
 Max. oil flow.....2 X 63 lpm
 1 x 52.5 lpm
 Pilot pump.....1 gear pump
 Max. oil flow.....22.5 lpm

SUPERSTRUCTURE

Swing speed.....11.3 rpm

RELIEF VALVE SETTINGS

Implement circuit.....350 kgf/cm²
 Swing circuit.....330 kgf/cm²
 Travel circuit.....350 kgf/cm²
 Pilot circuit.....40 kgf/cm²

UNDERCARRIAGE

Travel speeds.....0-5.0 kmph
 0-3.4 kmph
 Max.traction force.....4870 kgf
 Gradeability.....35^o (70% continuous)

SERVICE REFILL CAPACITIES

Hydraulic tank.....60.0 ltr
 Hydraulic system.....100.0 ltr
 Fuel tank.....135.0 ltr
 Engine coolant.....9.5 ltr
 Engine oil.....12.0 ltr
 Travel device (Each side).....2.5 ltr

WEIGHTS AND GROUND PRESSURE

Equipped with 3.72 m boom, 1.62 m arm

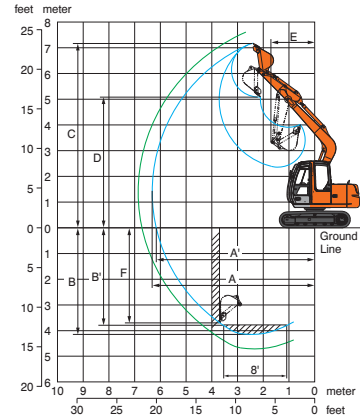
Shoe type	Shoe width	Operating weight	Ground pressure
Triple grouser	450 mm	7400 kg	0.32 kgf /cm ²

BUCKETS

BACKHOE

Capacity	Width without side cutter	Width with side cutter	Weight	Tooth points
0.3 m ³ (GP)	695 mm	796 mm	230 kg	4
0.3 m ³ (HD)	672 mm	-	263 kg	4

WORKING RANGES

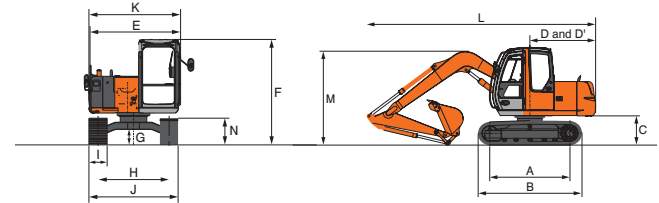


BACKHOE

	Boom length	3.72 m	
	Arm length	1.62 m	2.12 m
A	Max. digging reach	6320	6810
A'	Max. digging reach (on ground)	6170	6670
B	Max. digging depth	4170	4670
B'	Max. digging depth (8' level)	3820	4320
C	Max. cutting height	7150	7550
D	Max. dumping height	5060	5450
E	Min. swing radius	1720	2080
F	Max.vertical wall depth	3730	4280

All dimensions are in mm

DIMENSIONS



A	Distance between tumbles	2140
B	Undercarriage length	2765
C	Counterweight clearance	760
D	Rear-end swing radius	1750
D'	Rear-end length	1750
E	Overall width of upperstructure	2260
F	Overall height of cab	2600
*G	Min. ground clearance	360
H	Track gauge	1700
I	Track shoe width	450
J	Undercarriage width	2150
K	Overall width	2260
L	Overall length	
	With 1.62 m arm	6080
	With 2.12 m arm	6120
M	Overall height of boom	
	With 1.62 m arm	2550
	With 2.12 m arm	2880
N	Track height	655

The Specifications are subject to change without prior notice. The Machine depicted may vary from the actual Machine Please contact our nearest office for latest specifications. Accessories shown here are not part of the standard equipment Performance of the machine may vary with site and operating conditions encountered

Tata Hitachi Construction Machinery Company Limited

Registered Office : Jubilee Building 45 Museum Road Bangalore 560 025 India
 Telephone: +91 80 66953301 02 03 04 05 Fax: +91 80 66953309 25325792

Toll Free: 1800 3456 500



Authorised Dealer