

ZAXIS series

**TATA HITACHI**

Reliable solutions

# ZAXIS 120 H



***The New Age Excavator for  
Best in Class Performance***



## **HYDRAULIC EXCAVATOR**

Engine Power : 90 PS @ 2150 rpm  
Operating Weight : 12800 kg  
Bucket Capacity : 0.19 - 0.70 m<sup>3</sup>

# SPECIFICATIONS

## ENGINE

Model.....Isuzu CC-4BG1TC  
 Type.....Water-cooled, direct injection  
 Aspiration.....Turbocharged, Intercooled  
 Rated power.....90 PS @ 2150 rpm  
 Maximum torque.....35 kgfm @ 600 rpm

## HYDRAULIC SYSTEM

Main pumps.....2 variable displacements axial piston pumps  
 Max. oil flow.....2 X 105 lpm  
 Pilot pump.....1 gear pump  
 Max. oil flow.....33 lpm

## SUPERSTRUCTURE

Swing speed.....13.7 rpm

## RELIEF VALVE SETTINGS

Implement circuit.....350 kgf/cm<sup>2</sup>  
 Swing circuit.....330 kgf/cm<sup>2</sup>  
 Travel circuit.....350 kgf/cm<sup>2</sup>  
 Pilot circuit.....40 kgf/cm<sup>2</sup>

## UNDERCARRIAGE

Travel speeds.....0-5.5 kmph  
 0-3.4 kmph  
 Max traction force.....10400 kgf  
 Gradeability.....35<sup>o</sup> (70% continuous)

## SERVICE REFILL CAPACITIES

Hydraulic tank.....69.0 ltr  
 Hydraulic system.....130.0 ltr  
 Fuel tank.....250.0 ltr  
 Engine coolant.....19.0 ltr  
 Engine oil.....15.8 ltr  
 Travel device (Each side).....4.0 ltr  
 Swing mechanism.....3.2 ltr

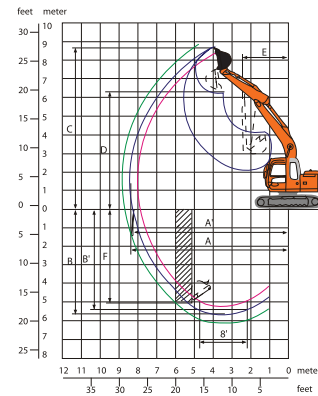
## BUCKETS

Capacity	Width without side cutter	Width with side cutter	Weight	Tooth points
0.70 m <sup>3</sup>	1066 mm	1186 mm	584 kg	5 (GP)
0.45 m <sup>3</sup>	802 mm			4 (HD)

## WEIGHTS AND GROUND PRESSURE

Shoe type	Shoe width	Operating weight	Ground pressure
Triple grouser	500 mm	12800 kg	0.38 kgf /cm <sup>2</sup>

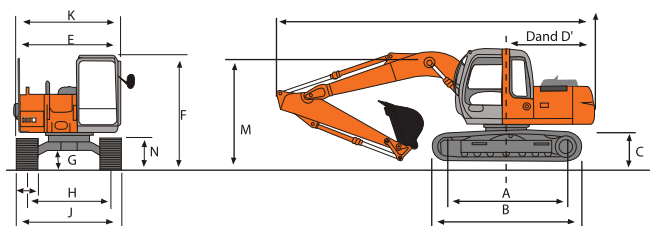
## WORKING RANGES



A	Max. digging reach	7900
A'	Max. digging reach (on ground)	7770
B	Max. digging depth	5150
B'	Max. digging depth (8' level)	4910
C	Max. cutting height	8370
D	Max. dumping height	5960
E	Min. swing radius	2310
F	Max. vertical wall	4650
	Bucket digging force	10100 kgf
	Arm crowd force	7500 kgf

All Dimensions are in mm

## DIMENSIONS



BACKHOE		
	Boom length	4600
	Arm length	2100
A	Distance between tumbles	2880
B	Under carriage length	3580
*C	Counterweight clearance	890
D	Rear-end swing radius	2130
D'	Rear-end length	2130
E	Overall width of upperstructure	2460
F	Overall height of cab	2740
*G	Min. ground clearance	440
H	Track gauge	1990
I	Track shoe width	500
J	Undercarriage width	2490
K	Overall width	2500
L	Overall length	7610
M	Overall height of boom	2580
N	Track height with triple grouser shoes	790

All dimensions are in mm

The Specifications are subject to change without prior notice. The Machine depicted may vary from the actual Machine Please contact our nearest office for latest specifications. Accessories shown here are not part of the standard equipment Performance of the machine may vary with site and operating conditions encountered

## Tata Hitachi Construction Machinery Company Limited

Registered Office : Jubilee Building 45 Museum Road Bangalore 560 025 India  
 Telephone: +91 80 66953301 02 03 04 05 Fax: +91 80 66953309 25325792

Toll Free: 1800 3456 500



Authorised Dealer